



Love Lane | Rugeley | WS15 2HL
Offers In The Region Of £77,000

 **Webbs**
estate agents

Summary

**** NO CHAIN ** POPULAR LOCATION ** VIEWING ADVISED ** WELL PRESENTED THROUGHOUT ** REFITTED KITCHEN & BATHROOM ** OVER 50s COMPLEX ****

WEBBS ESTATE AGENTS have the pleasure of offering this fantastic opportunity for those seeking a relaxed and accessible lifestyle, within walking distance to the town centre and local amenities. Don't miss out on making this wonderful property your new home! Location & Lifestyle: Enjoy the convenience of town centre living with this one-bedroom park home, offered with the added benefit of immediate occupancy and easy access to town centre amenities. The idyllic setting along the Trent & Mersey Canal towpath offers a peaceful retreat for nature enthusiasts.

Key Features

- NO UPWARD CHAIN
- ONE BEDROOM
- MODERN KITCHEN
- CLOSE TO RUGELEY TOWN CENTRE
- POPULAR PARK HOME
- LOUNGE
- BATHROOM
- VIEWING ADVISED

Rooms and Dimensions

THROUGH HALLWAY

LOUNGE

11'8" x 9'8" (3.58m x 2.96m)

KITCHEN DINER

7'9" x 9'6" (2.38m x 2.92m)

DOUBLE BEDROOM

9'4" x 9'8" (2.85m x 2.95m)

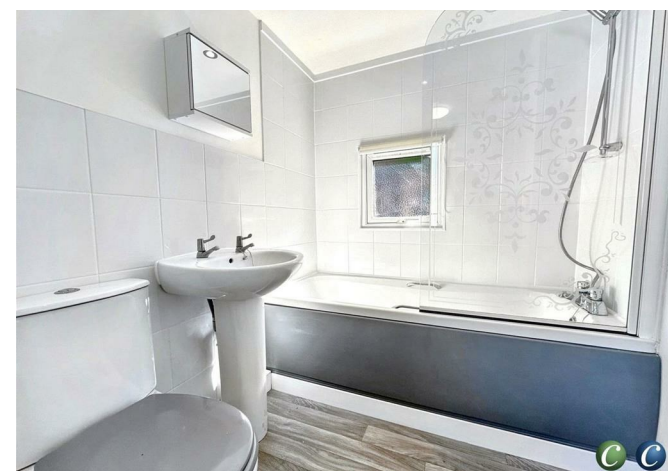
REFITTED BATHROOM

GARDENS

DRIVEWAY

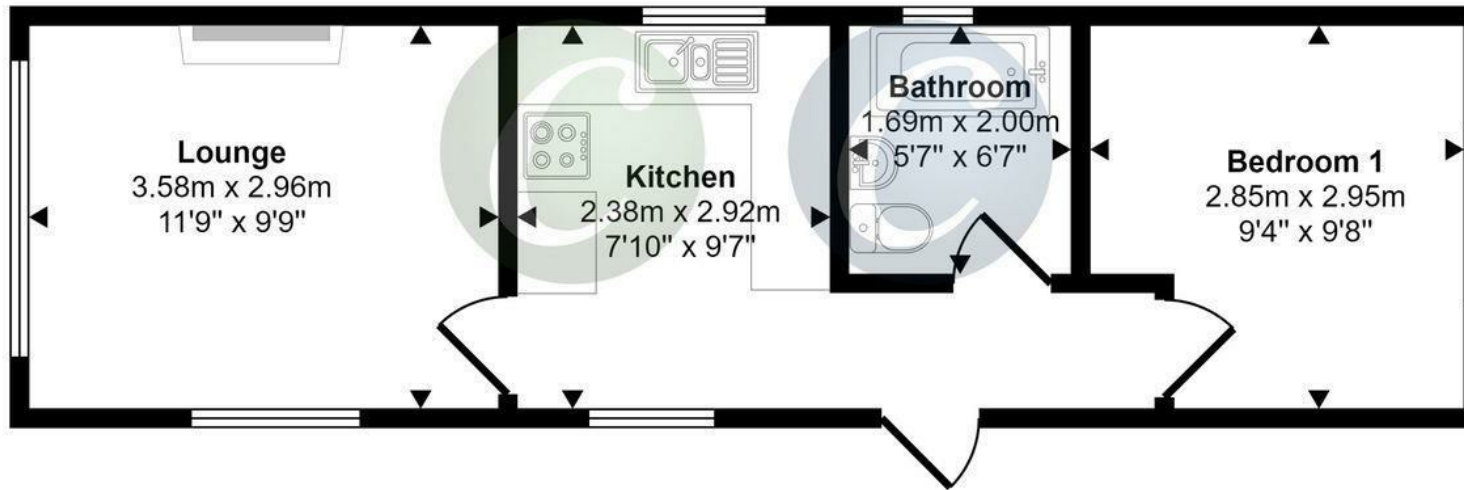
AGENTS NOTES

Identification Checks (R)





**Approx Gross Internal Area
32 sq m / 348 sq ft**



Floorplan

This floorplan is only for illustrative purposes and is not to scale. Measurements of rooms, doors, windows, and any items are approximate and no responsibility is taken for any error, omission or mis-statement. Icons of items such as bathroom suites are representations only and may not look like the real items. Made with Made Snappy 360.

Webbs Estate Agents - endeavour to maintain accurate depictions of properties in Virtual Tours, Floor Plans and descriptions, however, these are intended only as a guide and purchasers must satisfy themselves by personal inspection.